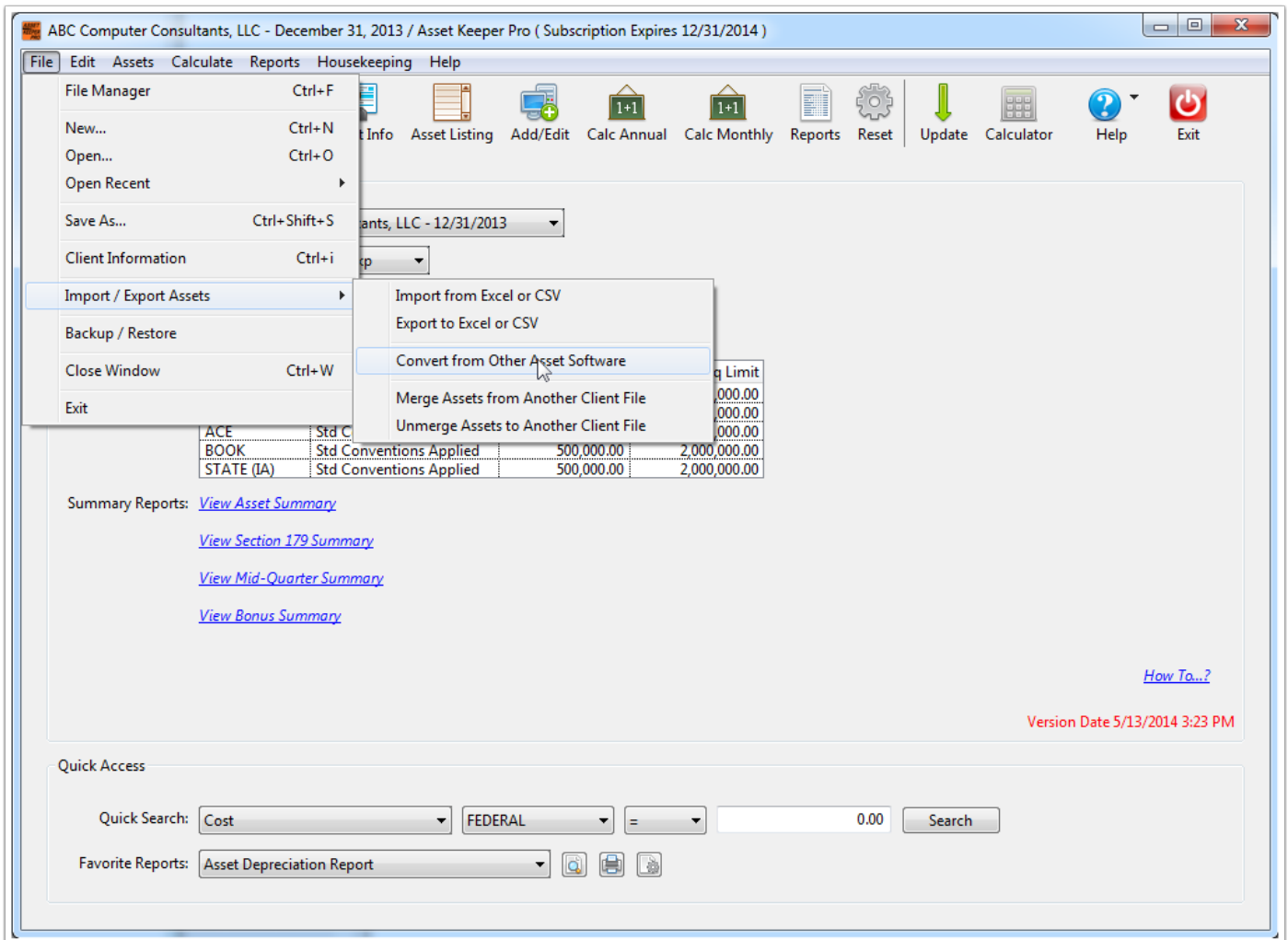


# Asset Keeper Pro - Convert from Other Asset Software - BNA Fixed Assets

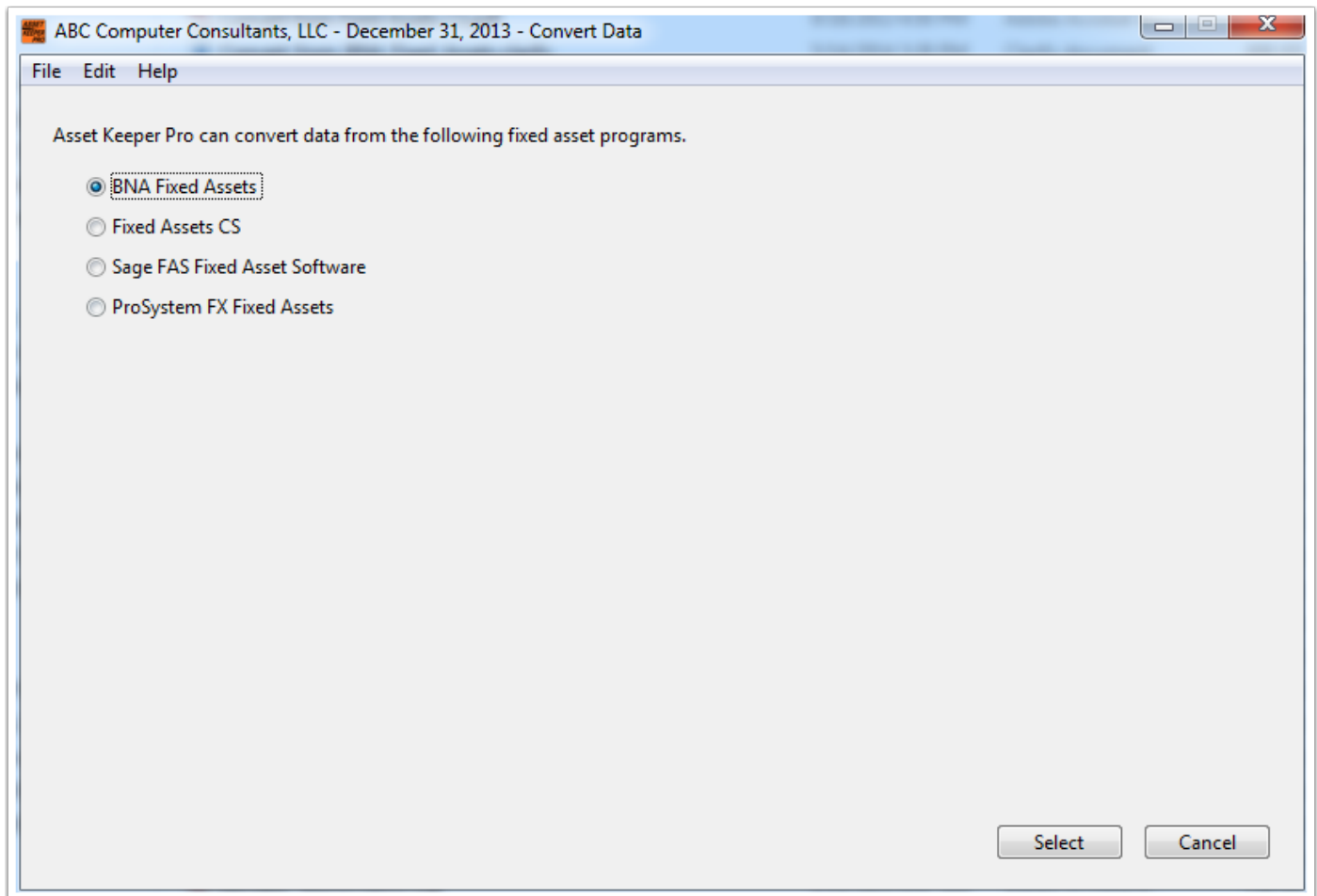
## Convert from Other Asset Software

To convert data from BNA Fixed Assets, select the Convert from Other Asset Software option in the File, Import / Exports Assets submenu.



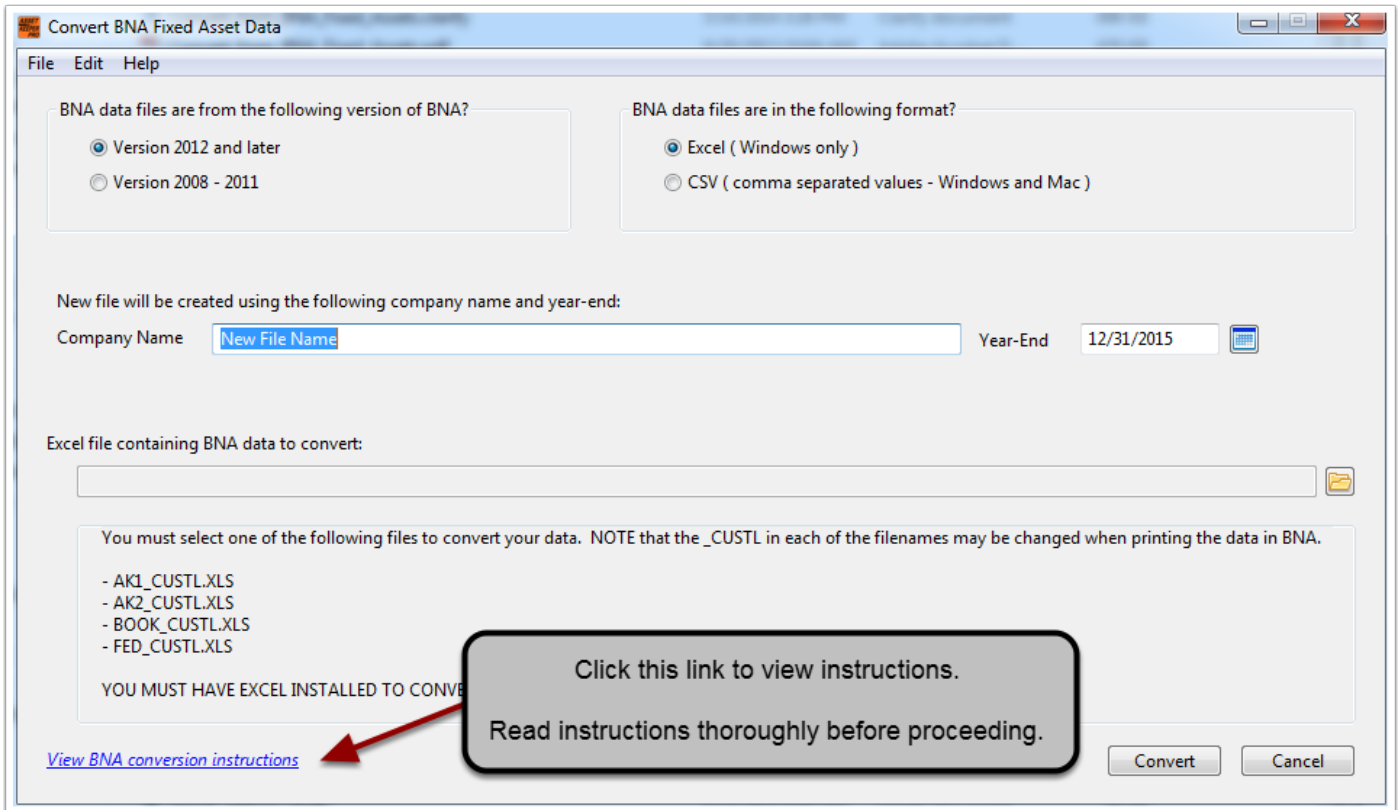
## Select other fixed asset program

On this screen, select what fixed asset program you are converting from. Since you are converting from BNA Fixed Assets, you would select the first option.



## View BNA conversion instructions

Before proceeding, click the "View BNA conversion instructions" option at the bottom of the screen to view or print the conversion instructions.



Convert BNA Fixed Asset Data

File Edit Help

BNA data files are from the following version of BNA?

Version 2012 and later  
 Version 2008 - 2011

BNA data files are in the following format?

Excel ( Windows only )  
 CSV ( comma separated values - Windows and Mac )

New file will be created using the following company name and year-end:

Company Name  Year-End

Excel file containing BNA data to convert:

You must select one of the following files to convert your data. NOTE that the \_CUSTL in each of the filenames may be changed when printing the data in BNA.

- AK1\_CUSTL.XLS
- AK2\_CUSTL.XLS
- BOOK\_CUSTL.XLS
- FED\_CUSTL.XLS

YOU MUST HAVE EXCEL INSTALLED TO CONVERT

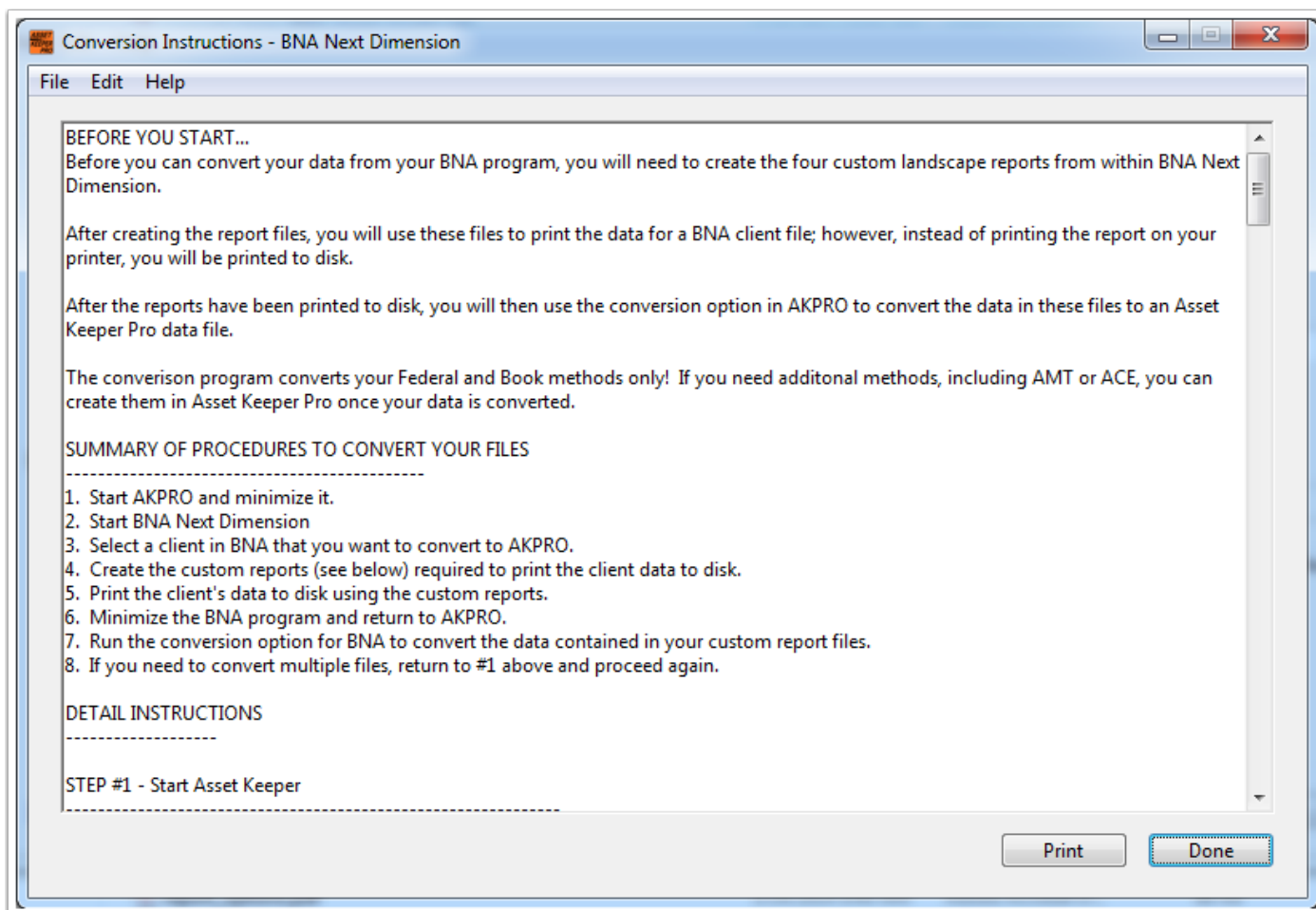
[View BNA conversion instructions](#)

Convert Cancel

Click this link to view instructions.  
Read instructions thoroughly before proceeding.

# BNA Conversion Instructions

Be sure to read the instructions thoroughly before proceeding with the conversion of your data.

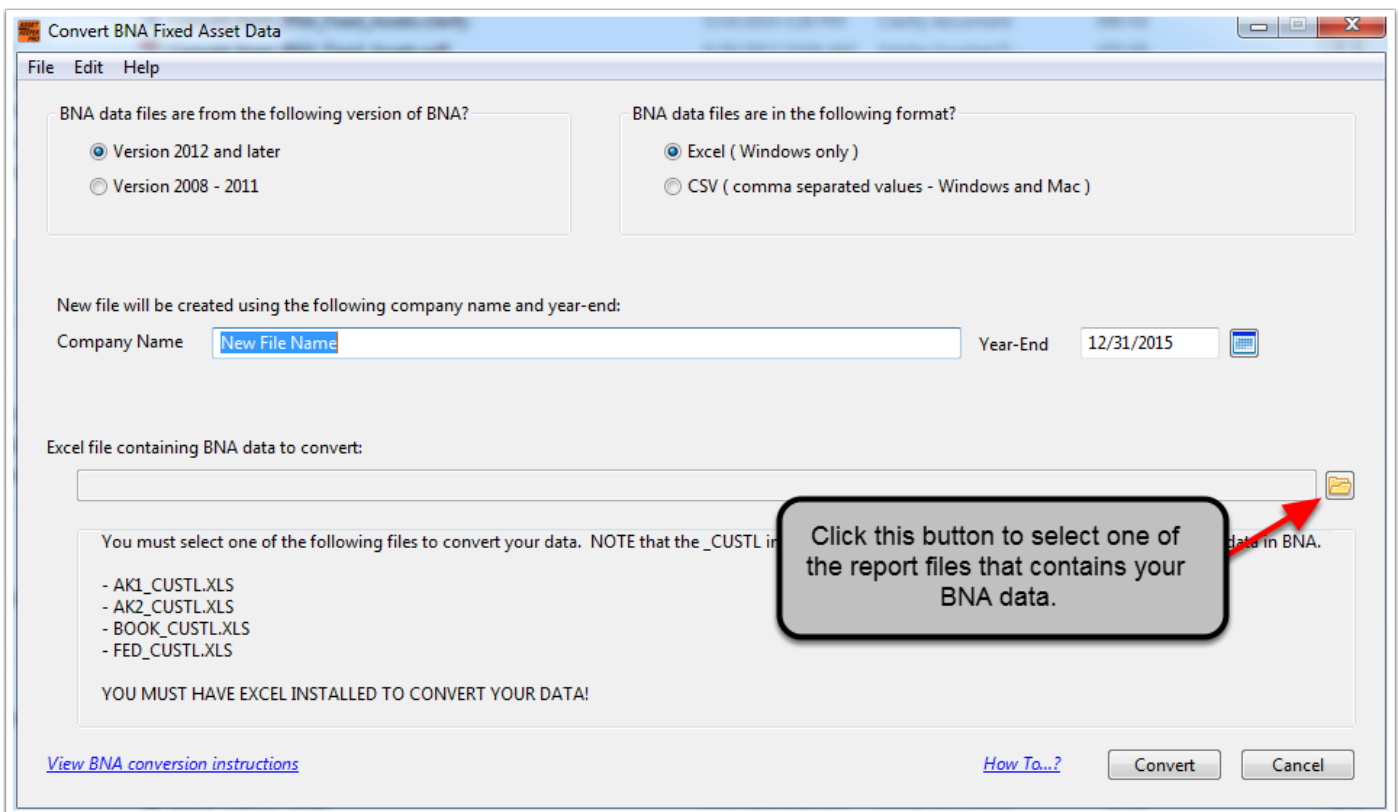


# BNA Conversion Options

When you have created your report files in BNA, you are then ready to convert your data. You will need to select the version of BNA that you are using and whether the report files you created are in Excel or CSV format.

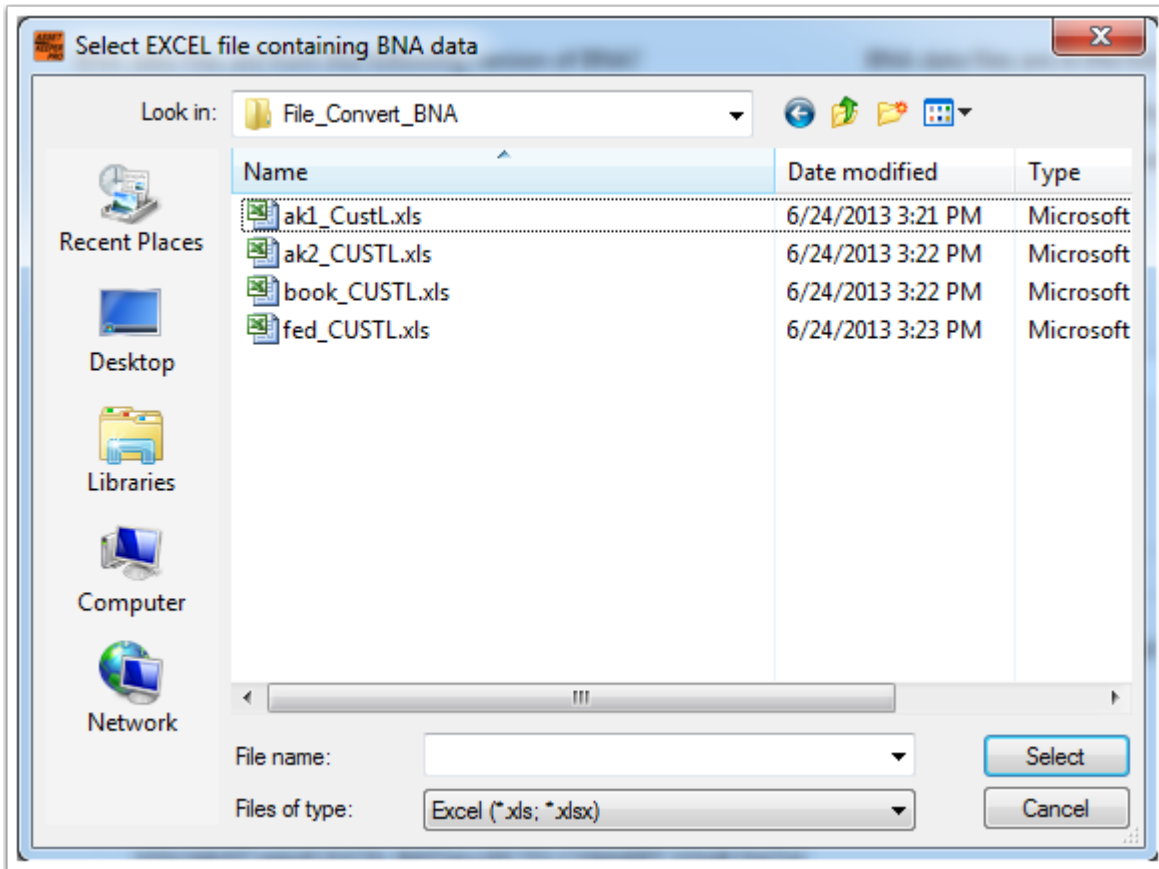
You should then enter the company name and year-end. The year-end should be the year following the last year calculated in BNA. For example, if you have already completed 12/31/12 and prepared financial statements or tax returns, then you should enter 12/31/2013 for the year-end.

Finally, you will need to click the button with the Folder icon on it to select one of the report files you created with BNA, then click the Convert button.



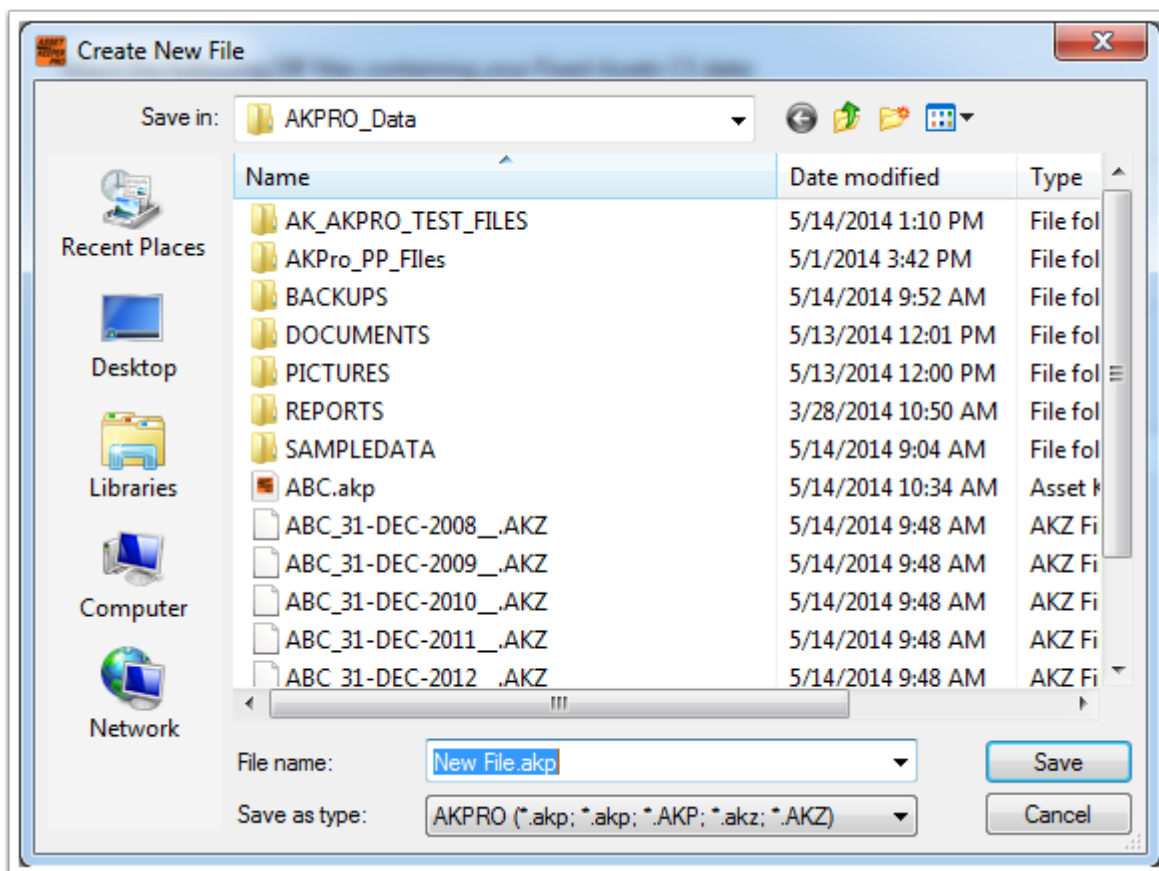
## Select BNA report file

This is the dialog screen that is used to select one of the report files that contains your BNA data.



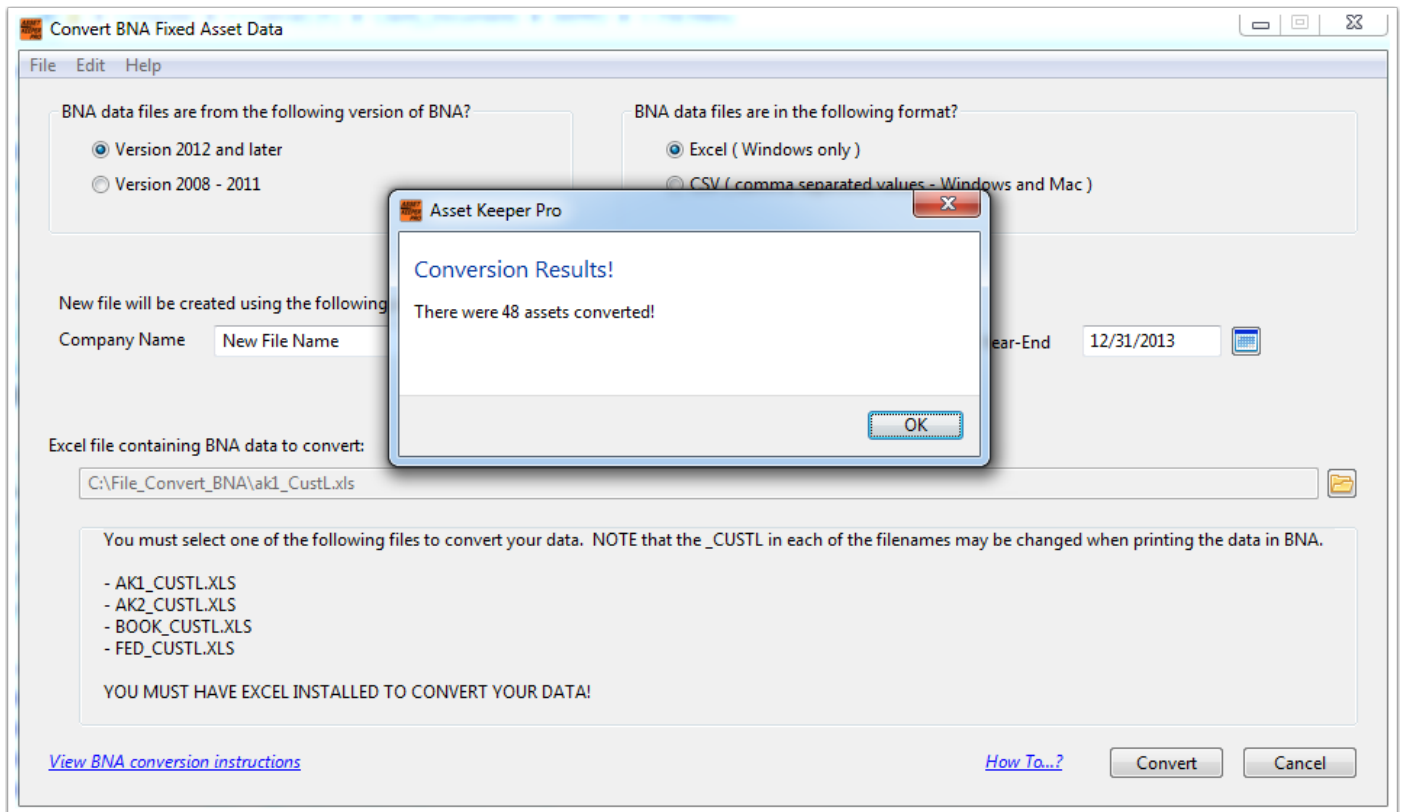
## Create New File

After clicking the Convert button, you will be prompted to select a location and enter a filename for your Asset Keeper Pro data file that will contain your converted data. If you enter a filename that already exists, you will be asked if you want to overwrite it.



# Conversion results

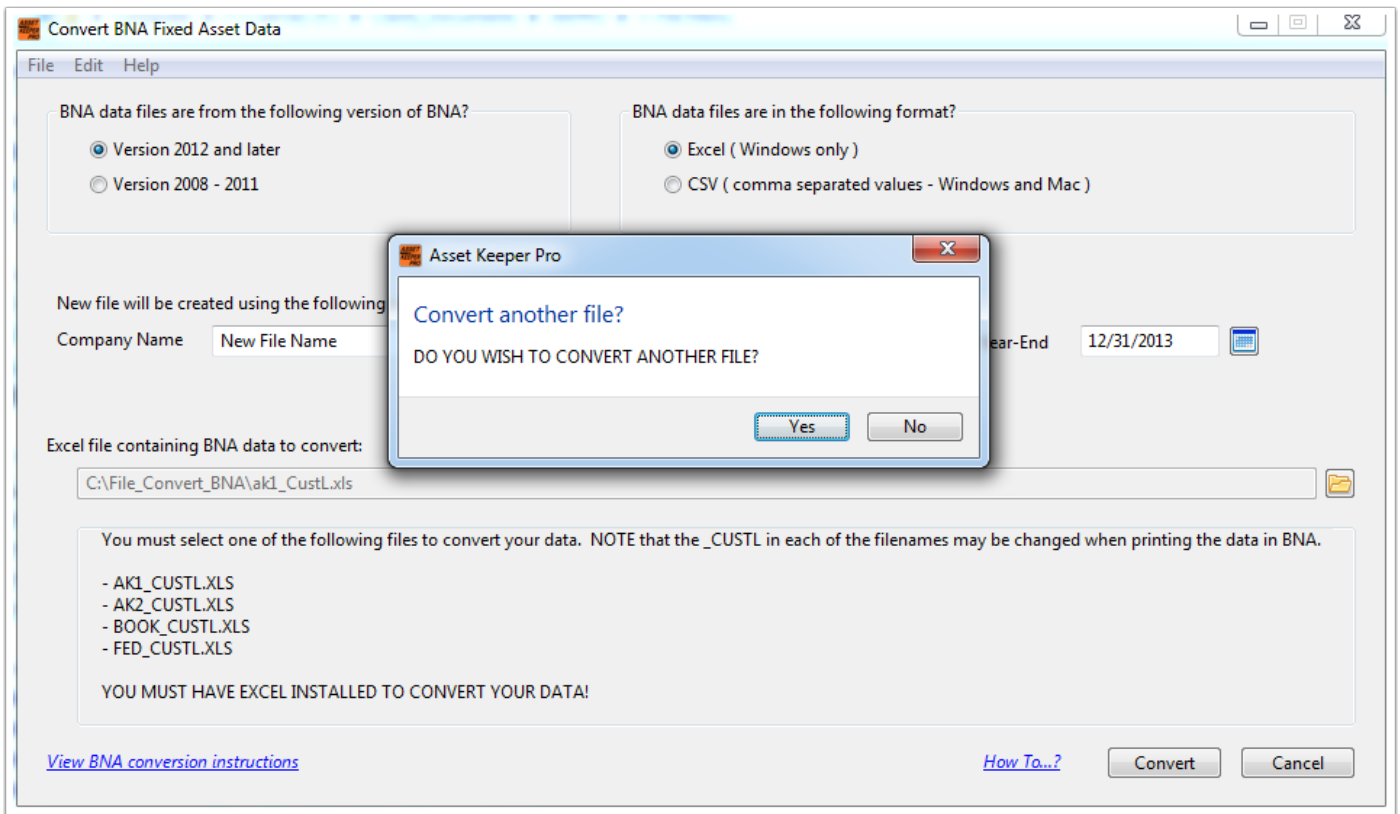
After your data is converted, you will see a message box that will tell you how many assets were converted.





## Convert another file

You will then be asked if you want to convert additional client data from BNA.



## Select data file containing BNA converted data

After your data is converted, you can use the Open button on the Home screen toolbar to select the AKPRO data file that was created and contains your converted data.

